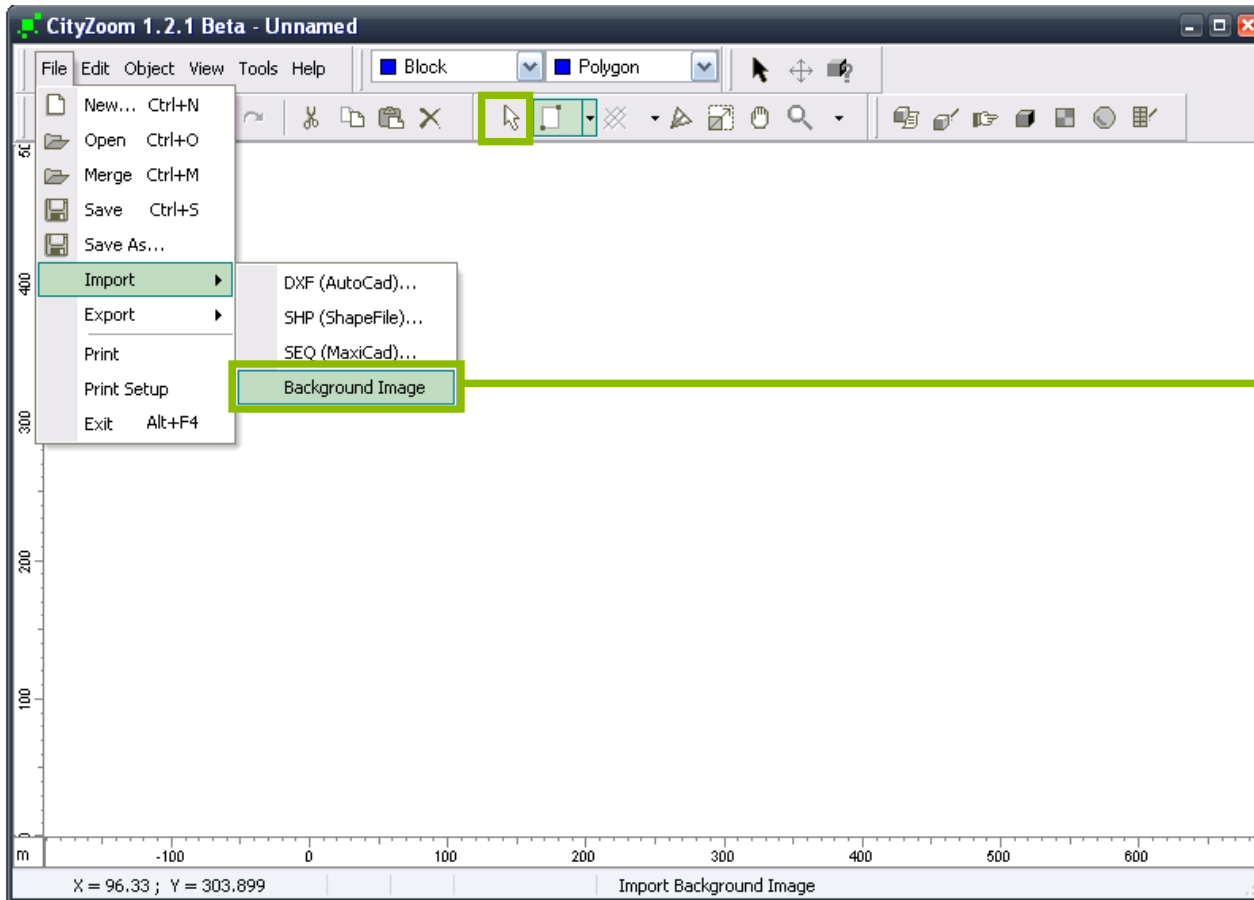


# **SCALING IMAGES**

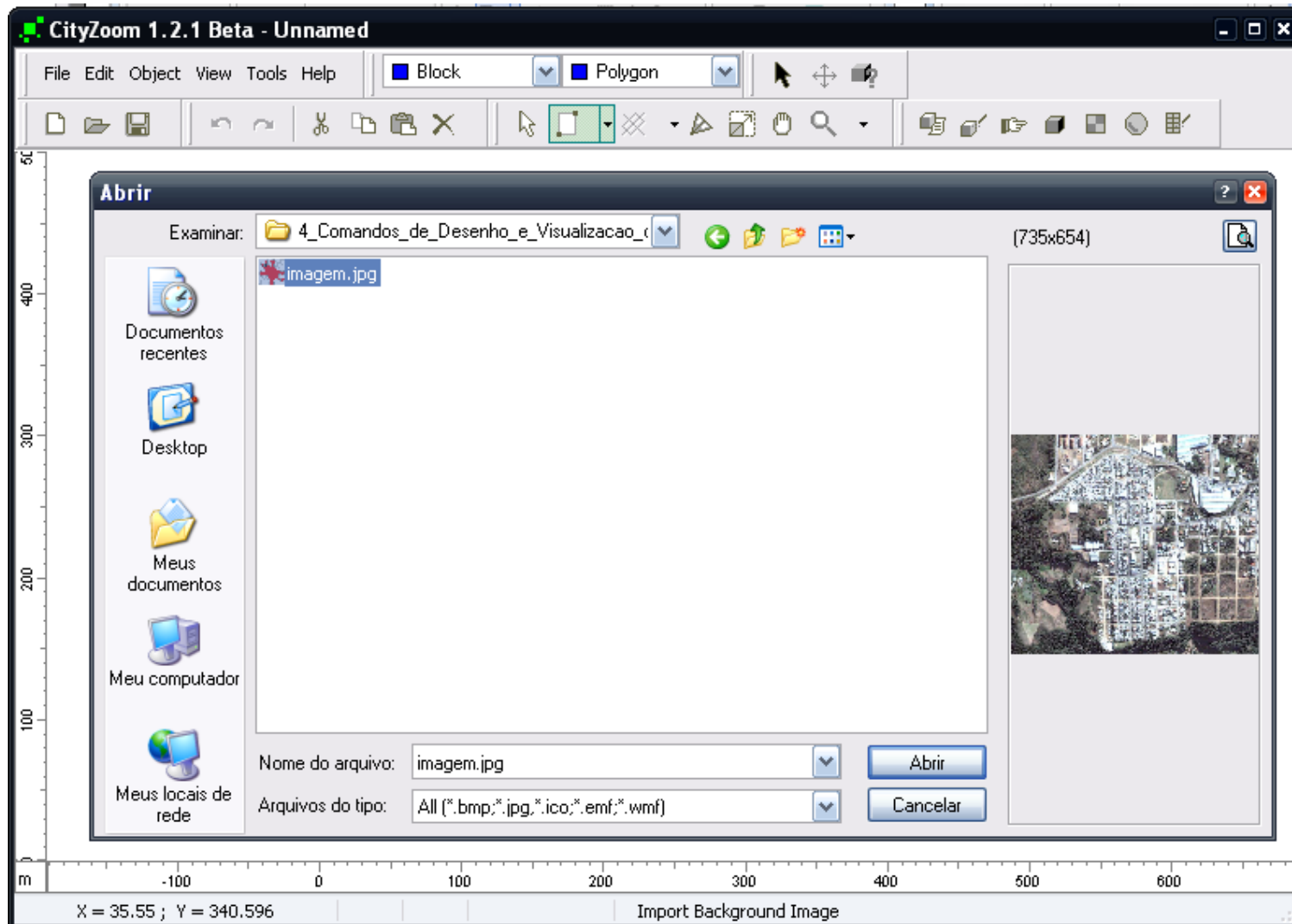
# Scaling images



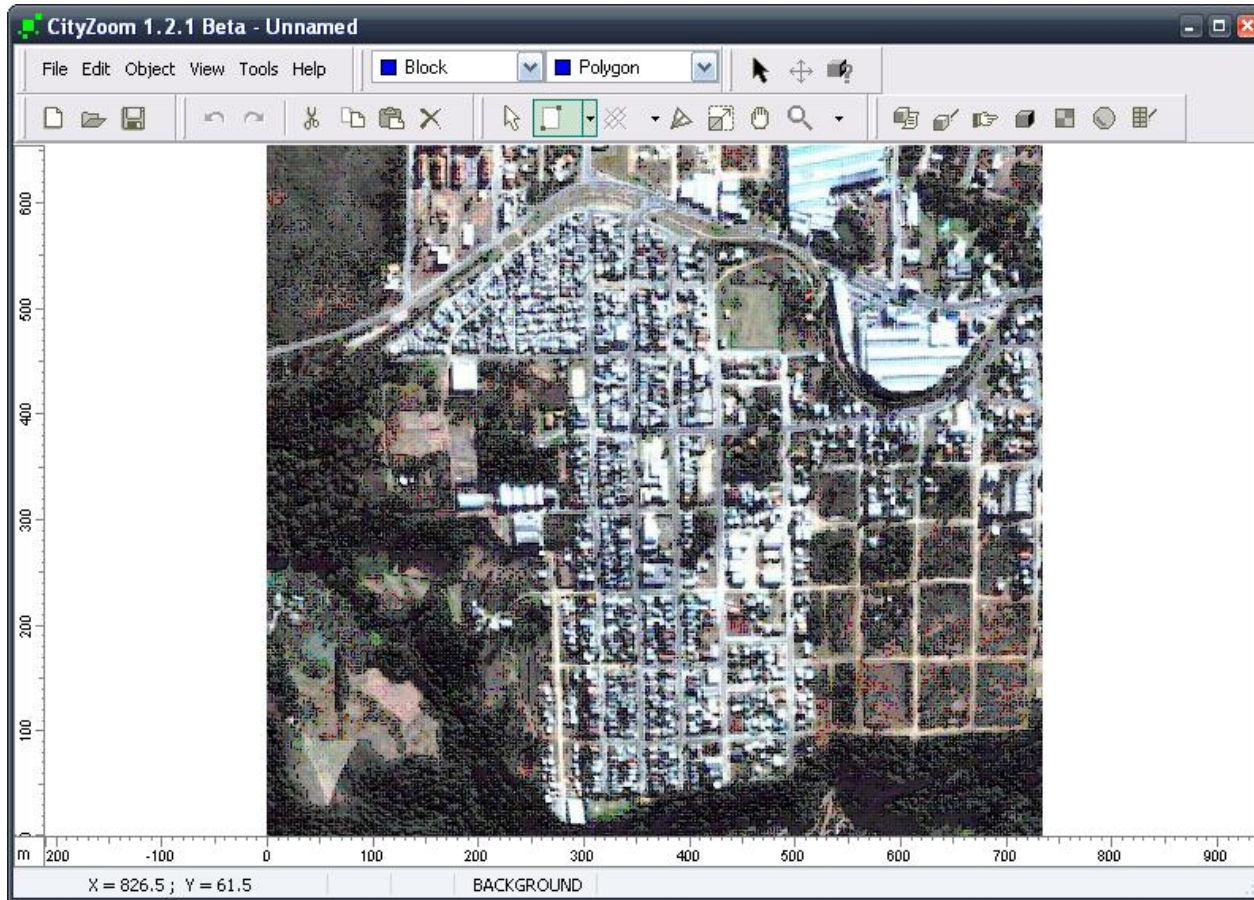
The **Scale and Position** tool allows the user to change objects scale.

Click File → Import → Background Image and import the image **sao\_gabriel.jpg**

# Scaling images

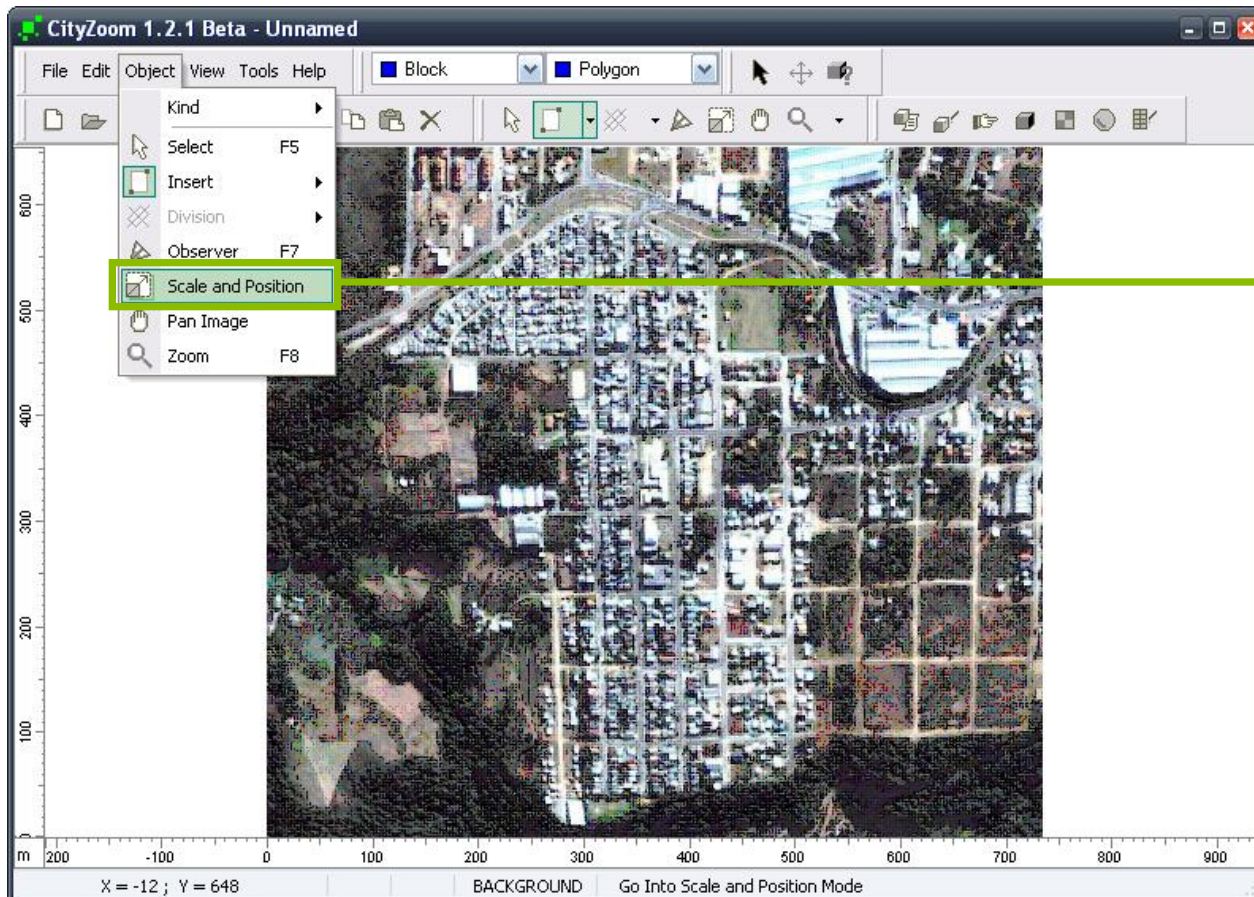


# Scaling images

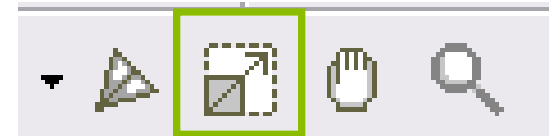


To adjust the image size, at least one known dimension is needed.

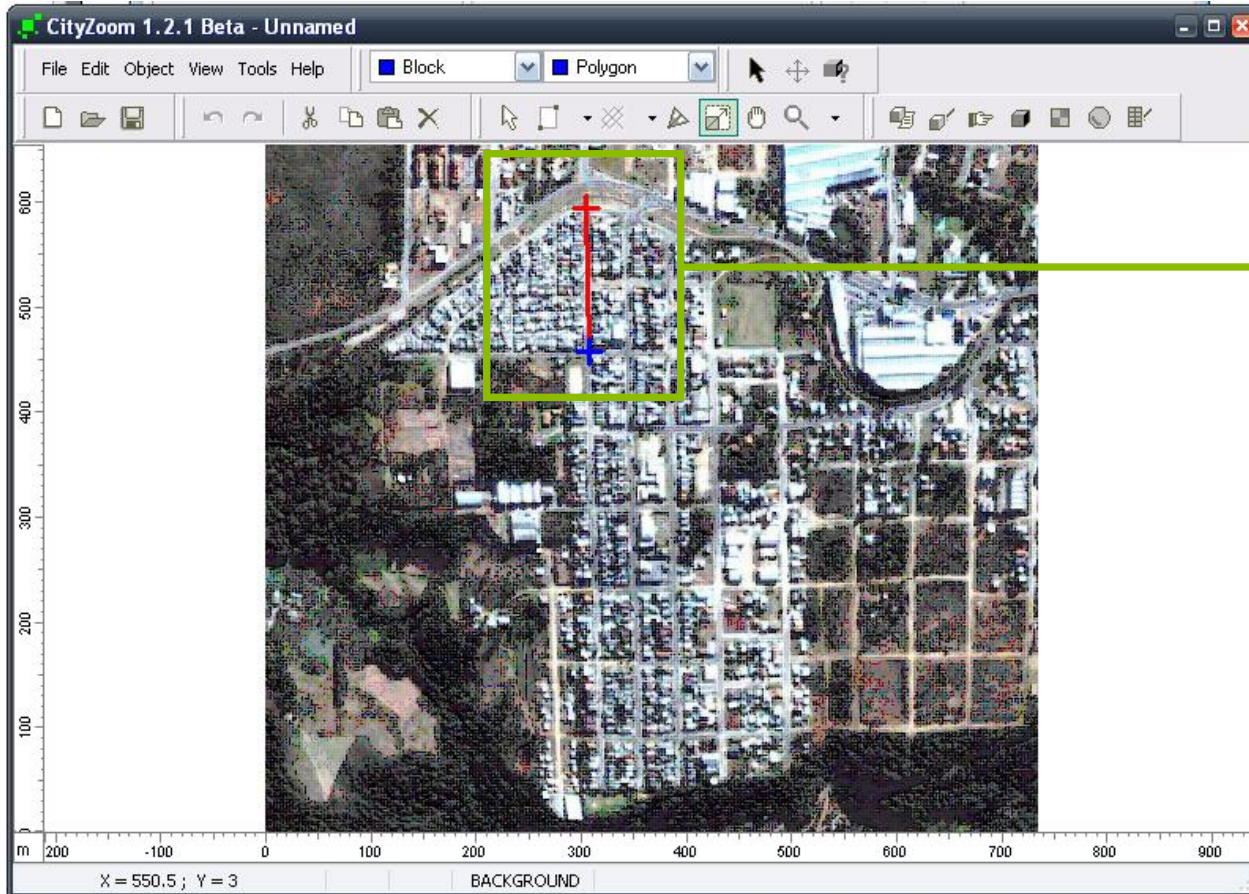
# Scaling images



Click **Scale and Position** in the Object menu or on the icon in the toolbar.

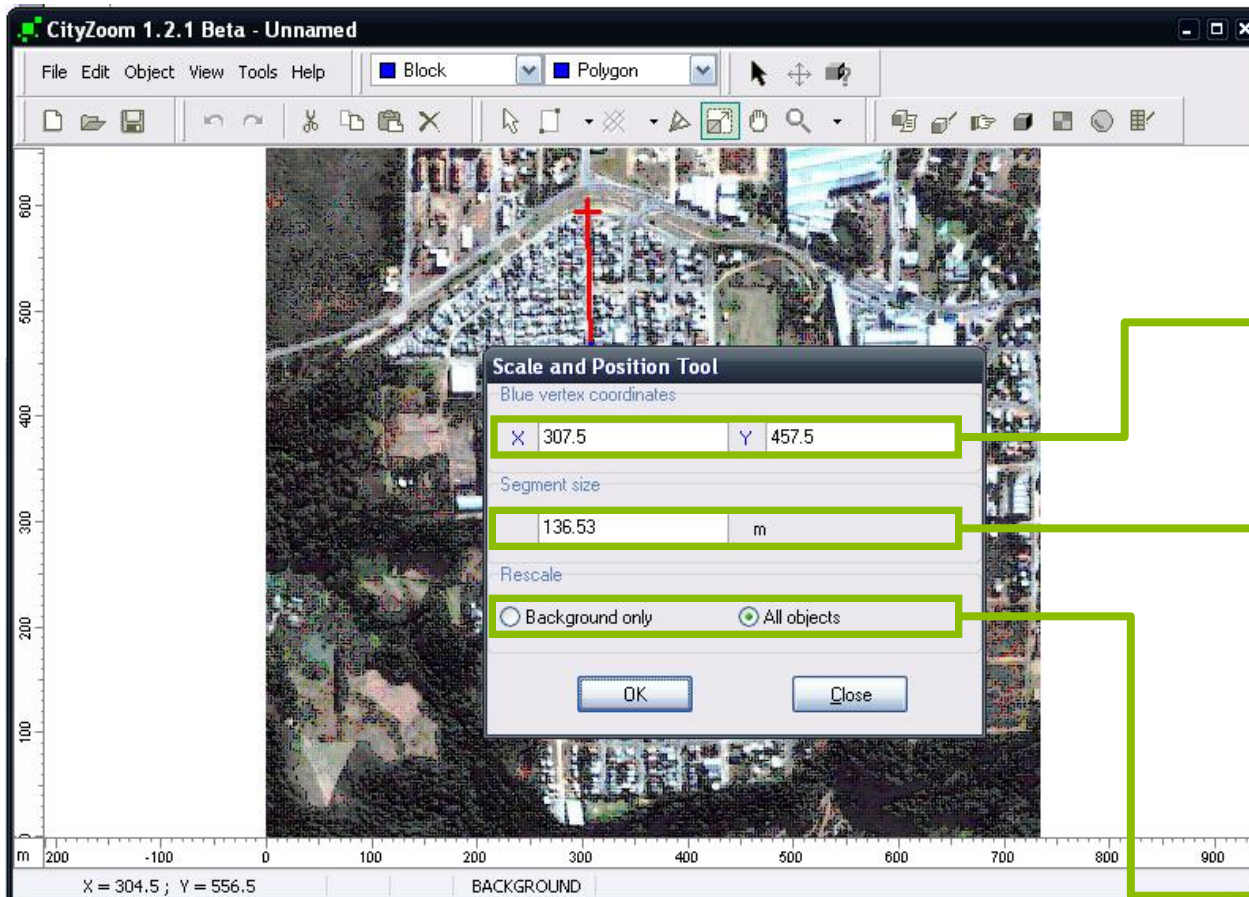


# Scaling images



Left-click in the starting point of the known dimension and then right-click in the ending point.

# Scaling images



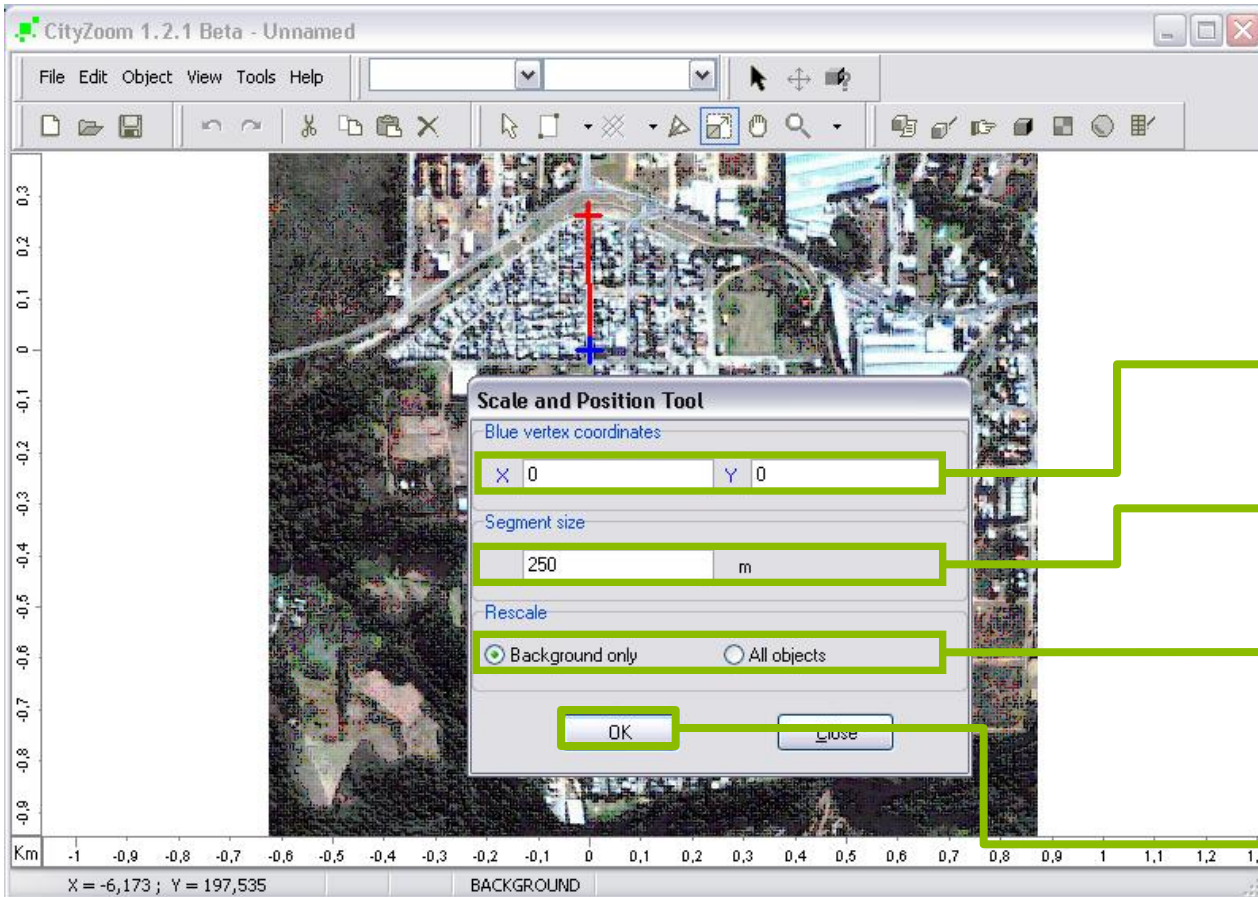
Right-click in the drawn line to open the **Scale and Position** window.

Put the X and Y coordinates of the starting point (blue point) of the drawn line.

Enter the real size of the line in the **Segment Size** field.

Choose the option to **Rescale** only the background image or all the existing objects.

# Scaling images



Set  $X = 0$  and  $Y = 0$  for the first point.

Set the Segment Size to 250 meters.

Check **Background only** to rescale the image only.

Click OK to confirm