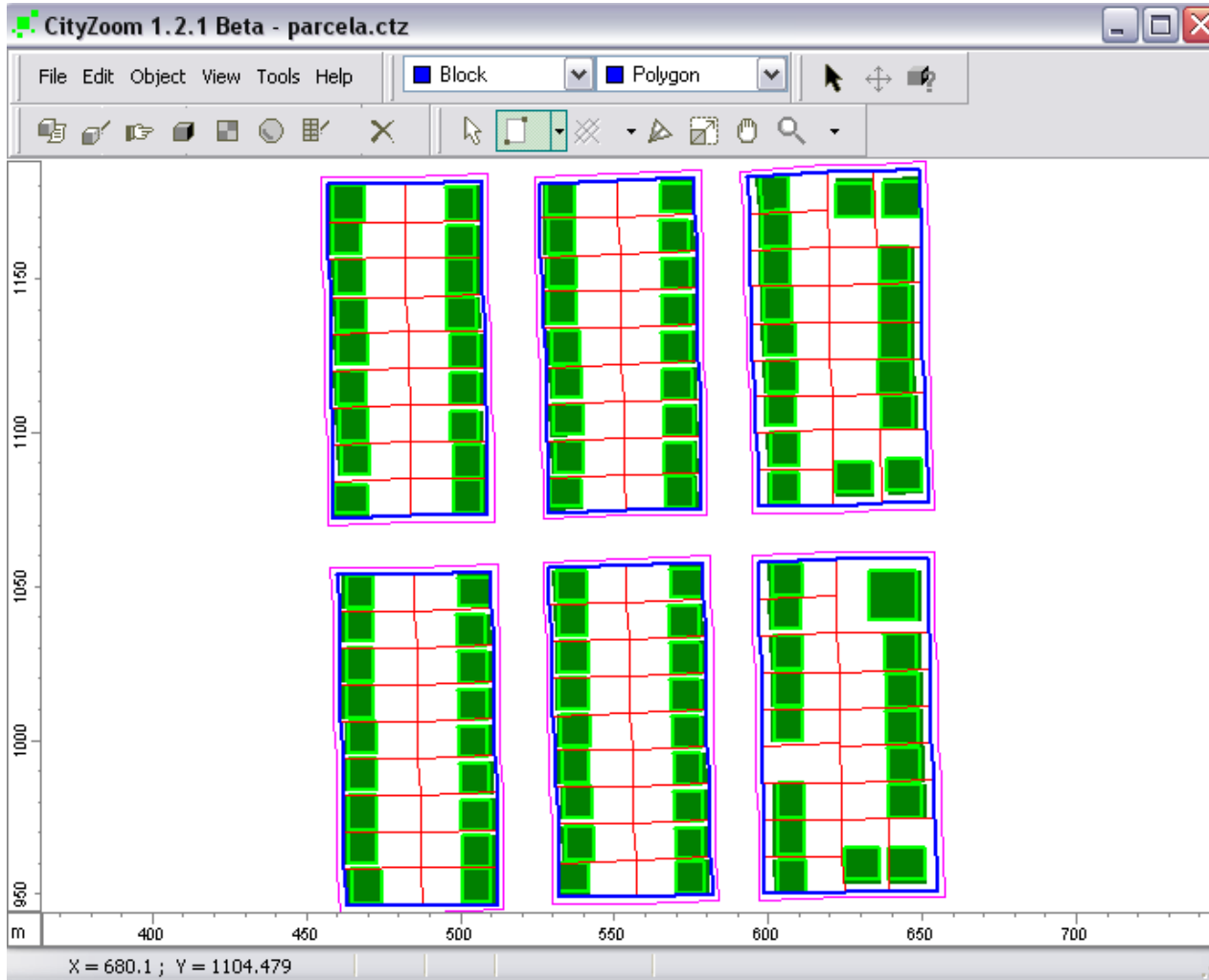


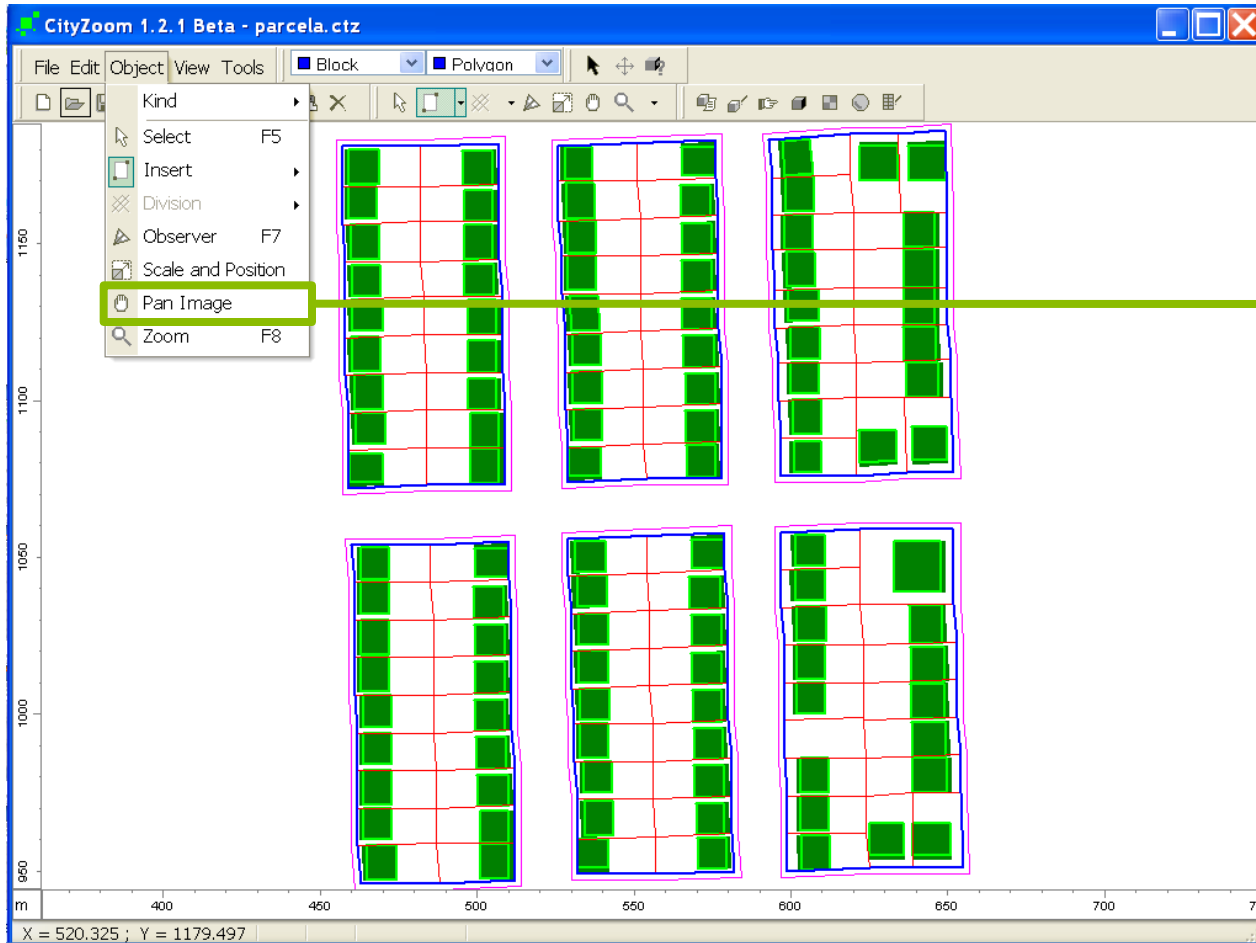
NAVIGATION TOOLS - 2D & 3D

Navigation Tools



Open the file [parcela.ctz](#).

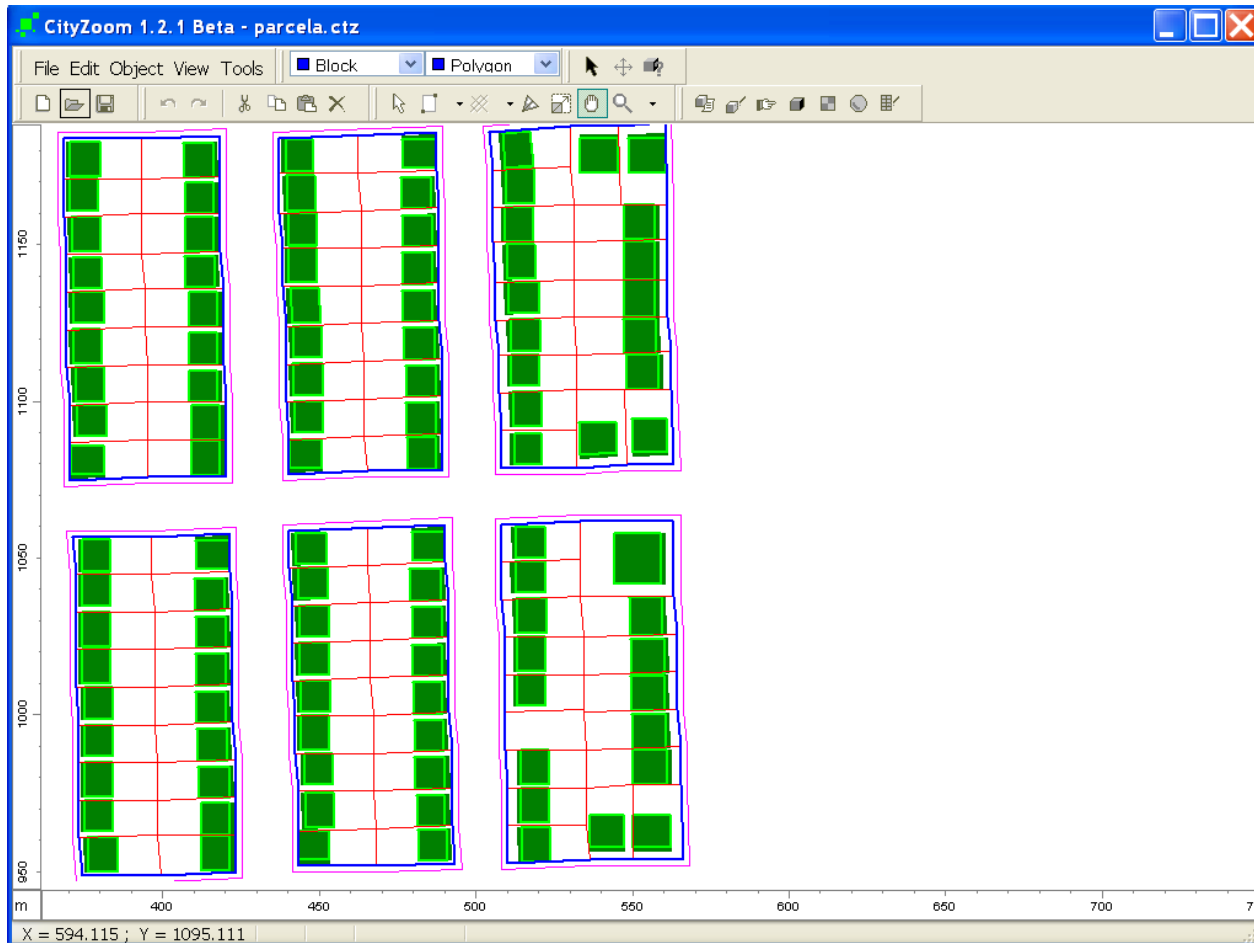
Navigation Tools



Select the **Pan Image** tool on the **Object** menu or on the toolbar.

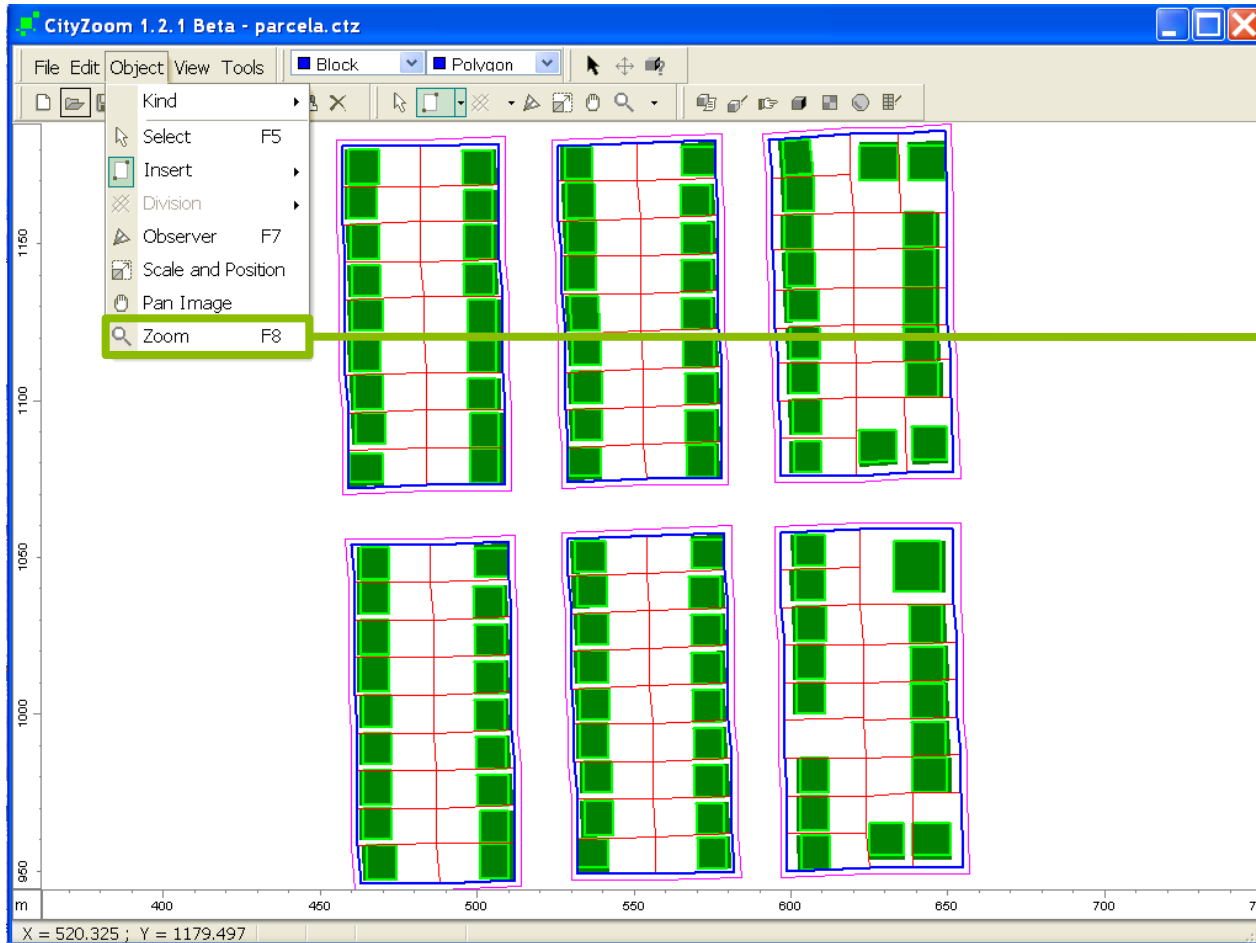


Navigation Tools



Click on the screen and drag the mouse to test the **Pan Image** tool.

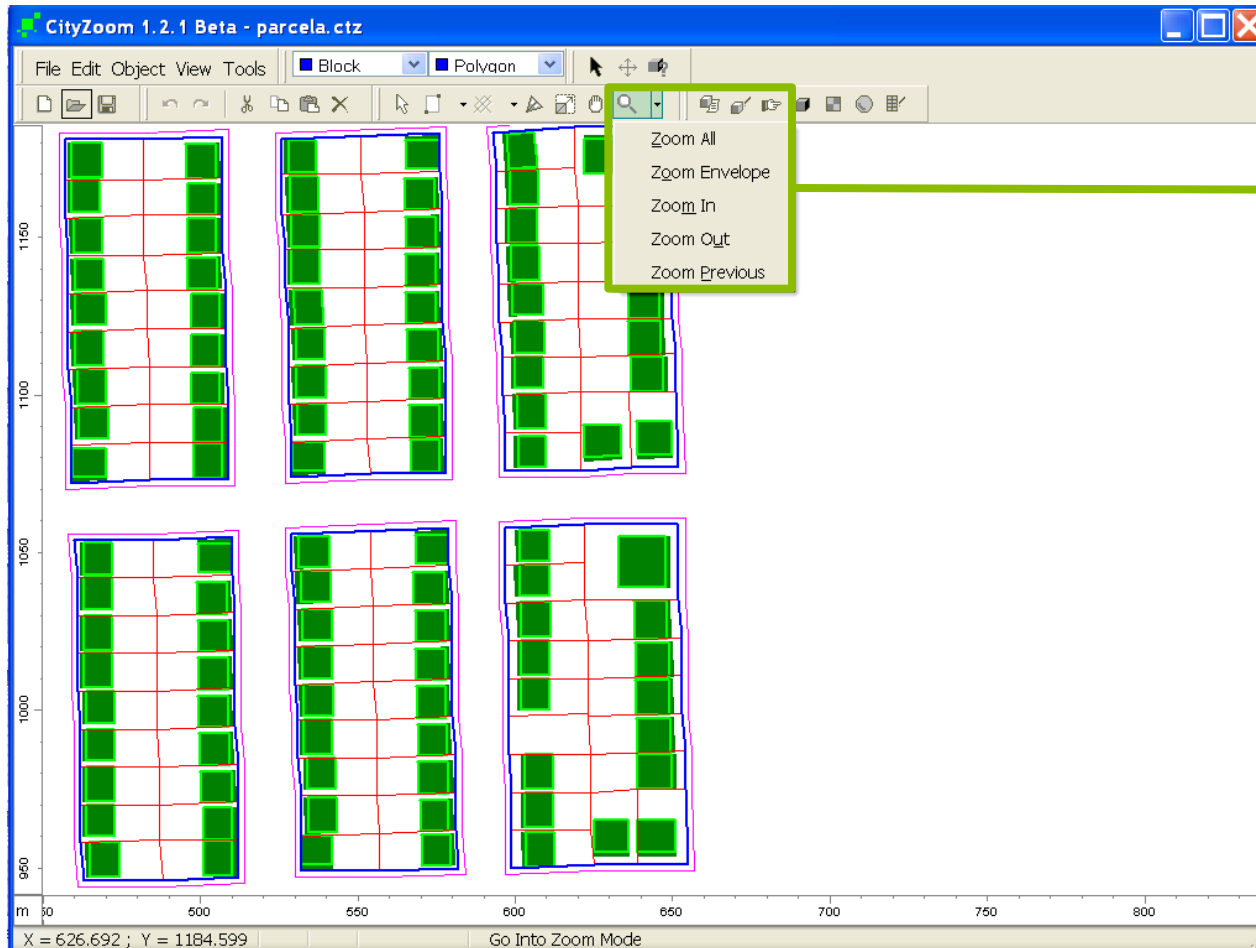
Navigation Tools



Select the **Zoom** tool on the **Object** menu, on the toolbar or using the **F8** key shortcut.



Navigation Tools



There are other **Zoom** options on the toolbar:

Zoom All – view the entire project on the screen

Zoom Envelope – view the defined area by the user in the “2D Configuration” window

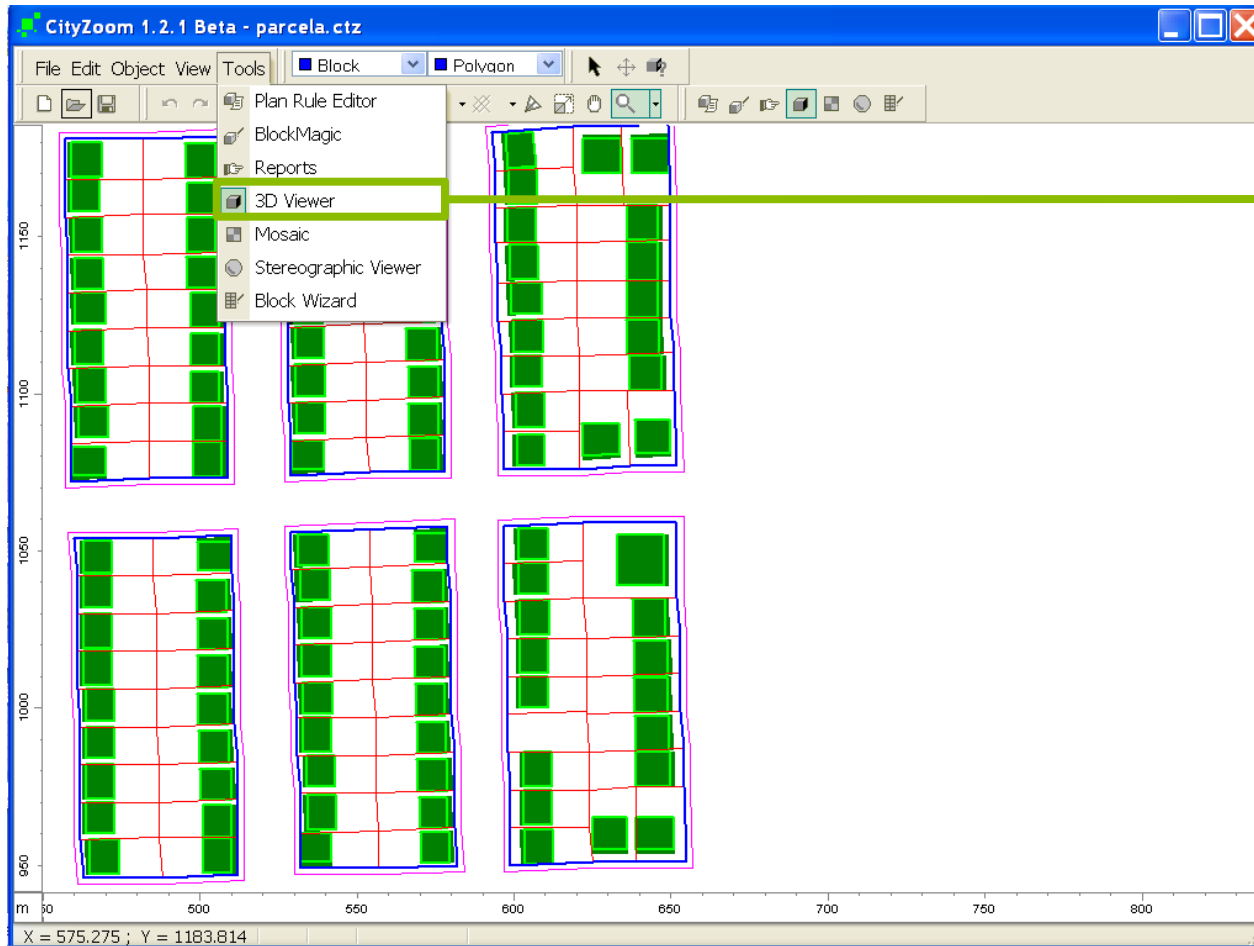
Zoom In – moves the camera closer to the drawing

Zoom Out – moves the camera away from the drawing

Zoom Previous – Returns to the previous view

• The “2D Configuration” window will be explained in another tutorial.

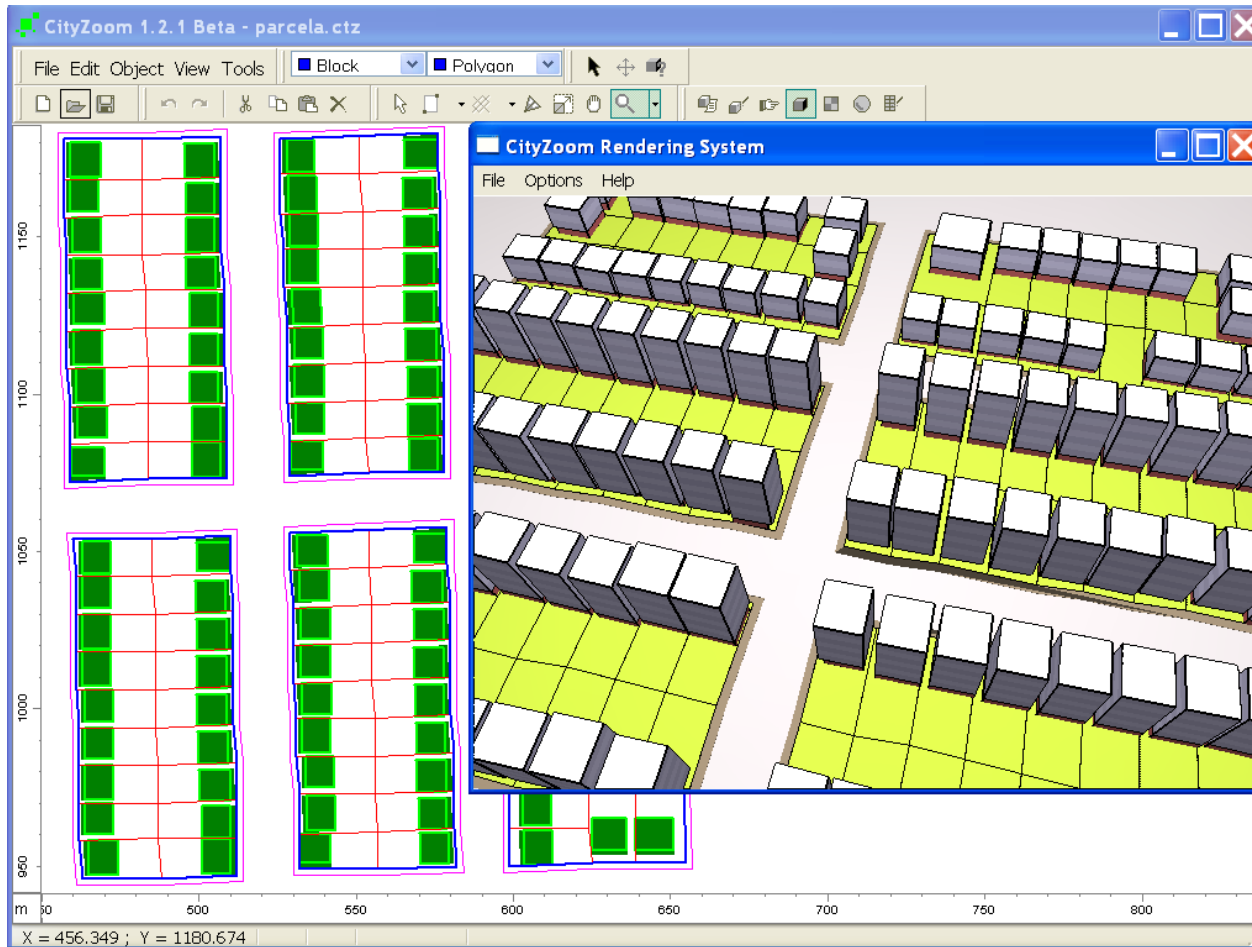
Navigation Tools



To open the “3D view” window choose **3D viewer** tool on the **Tools** menu or click the icon on the toolbar.

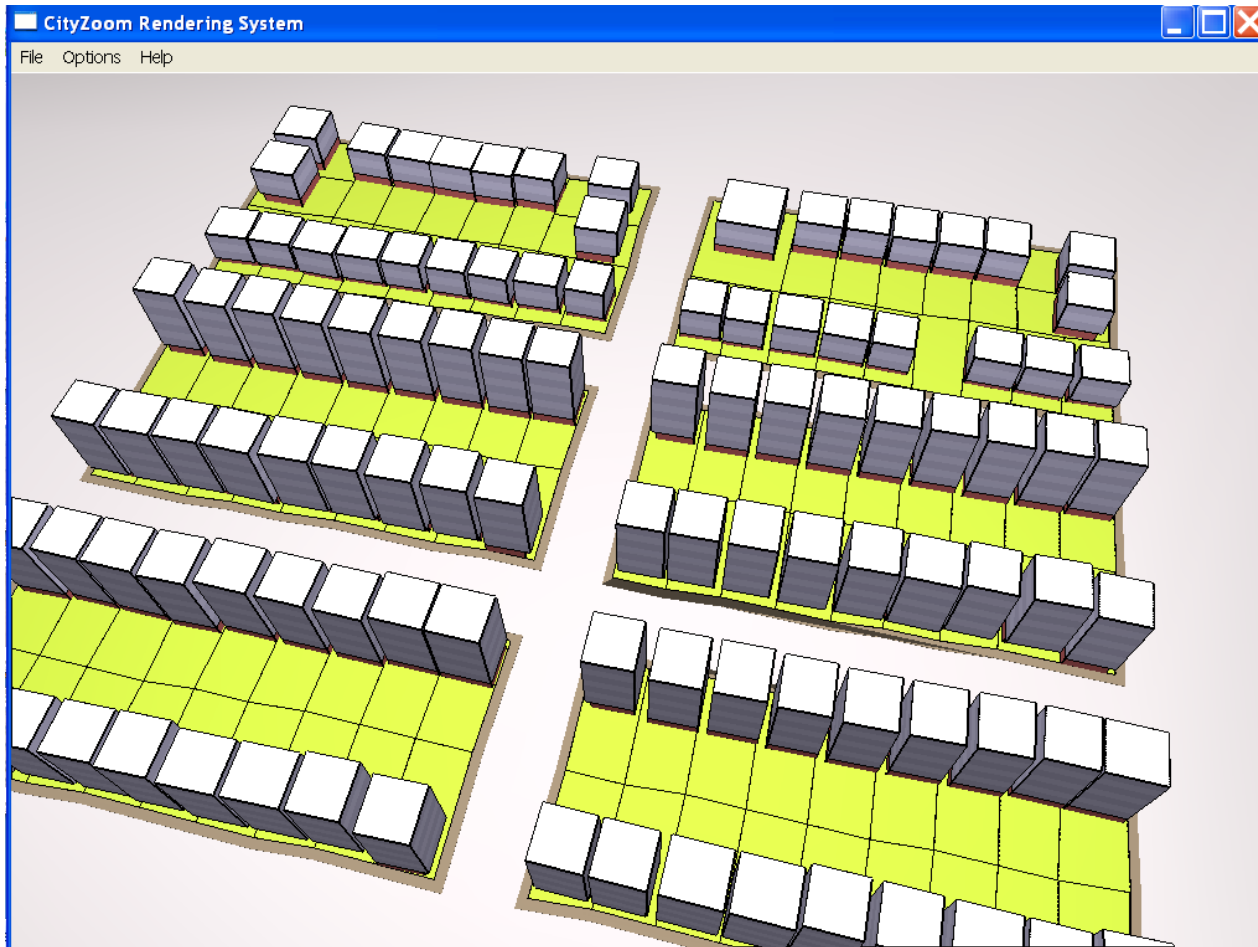


Navigation Tools



3D View window

Navigation Tools



The default 3D navigation commands are:

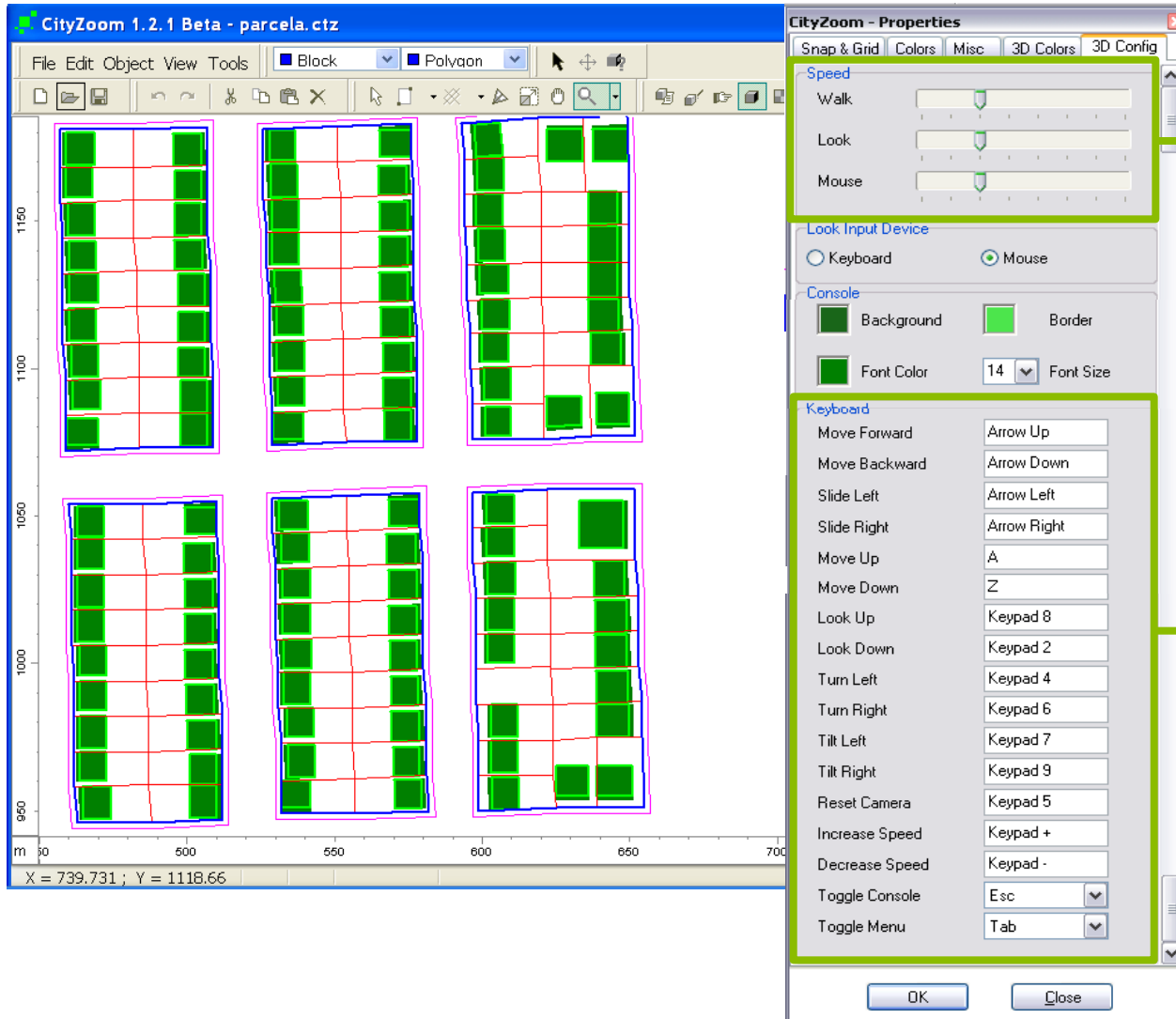
A: Increases the observer height (positive movement along the Z axis)

Z: Decreases the observer height (negative movement along the Z axis)

The keys \uparrow , \downarrow , \rightarrow , \leftarrow move the observer around the scenario.

Right mouse button: rotates the camera around the observer.

Navigation Tools



3D Configuration can be set on the appropriate tab from the **Edit** menu.

Speed: Sets the navigation speed

Keyboard: Sets the navigation shortcuts