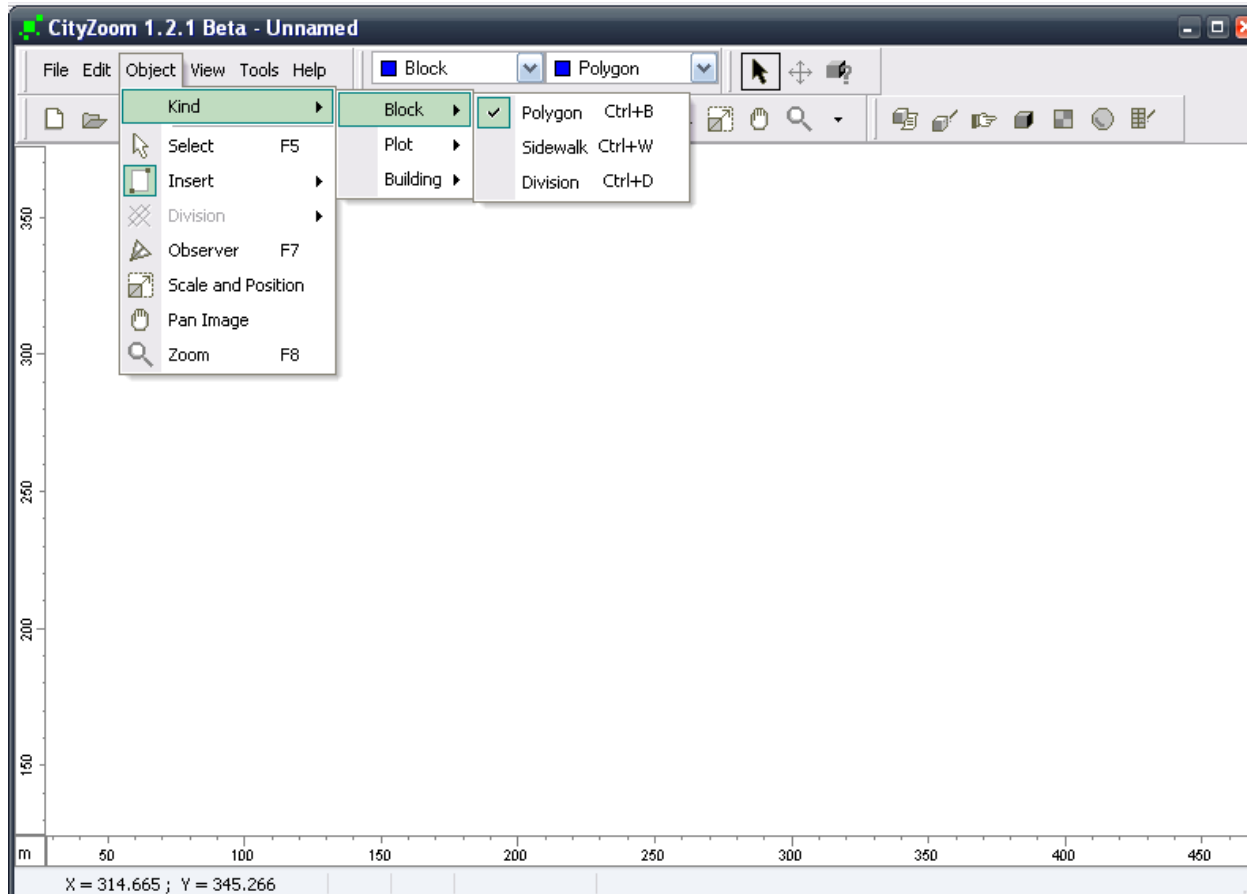


DRAWING

Drawing



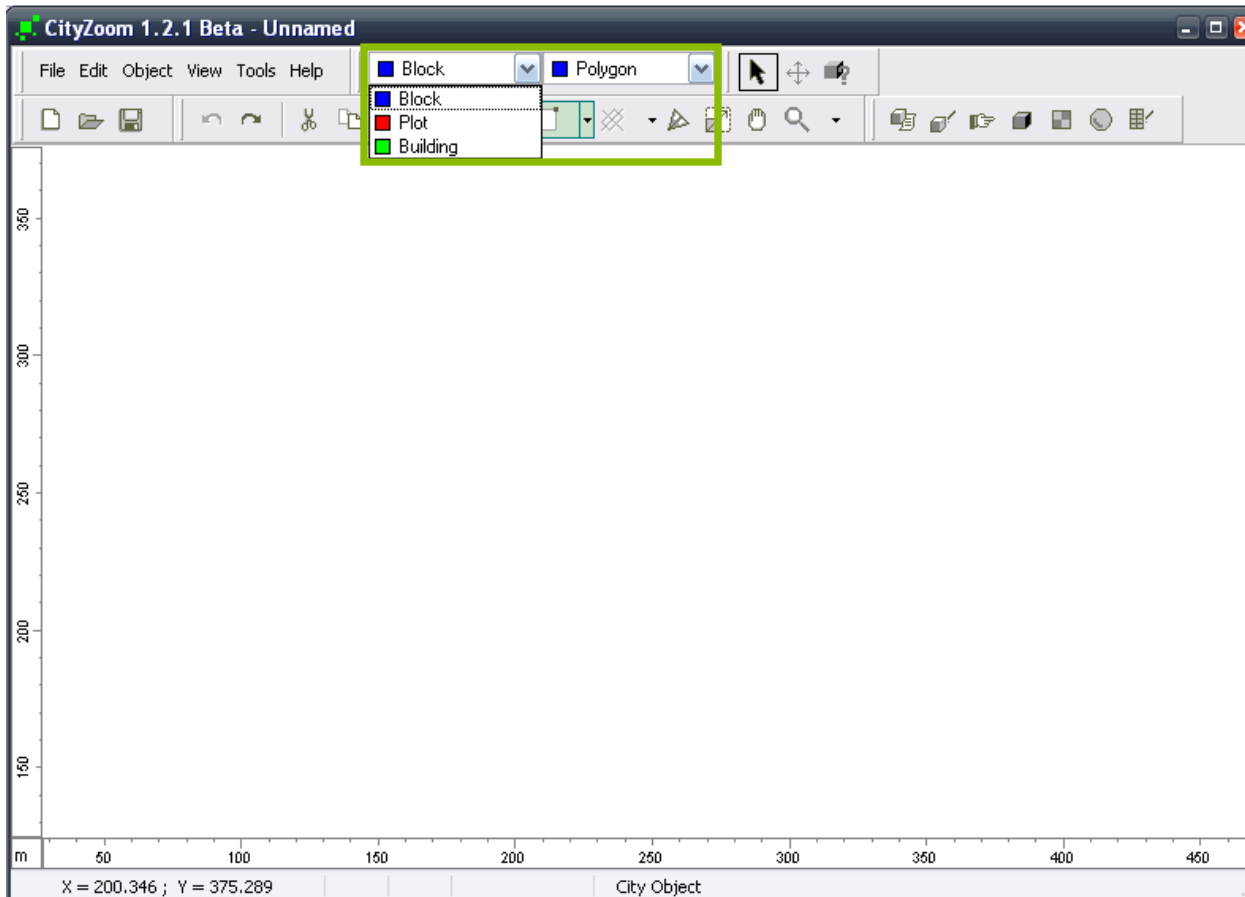
Kind: select the working object. The options are:

Block
Plot
Building

To start drawing, select the object **Block Polygon**.

Important! The drawing must start by the blocks.

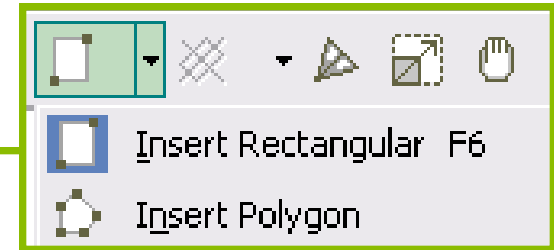
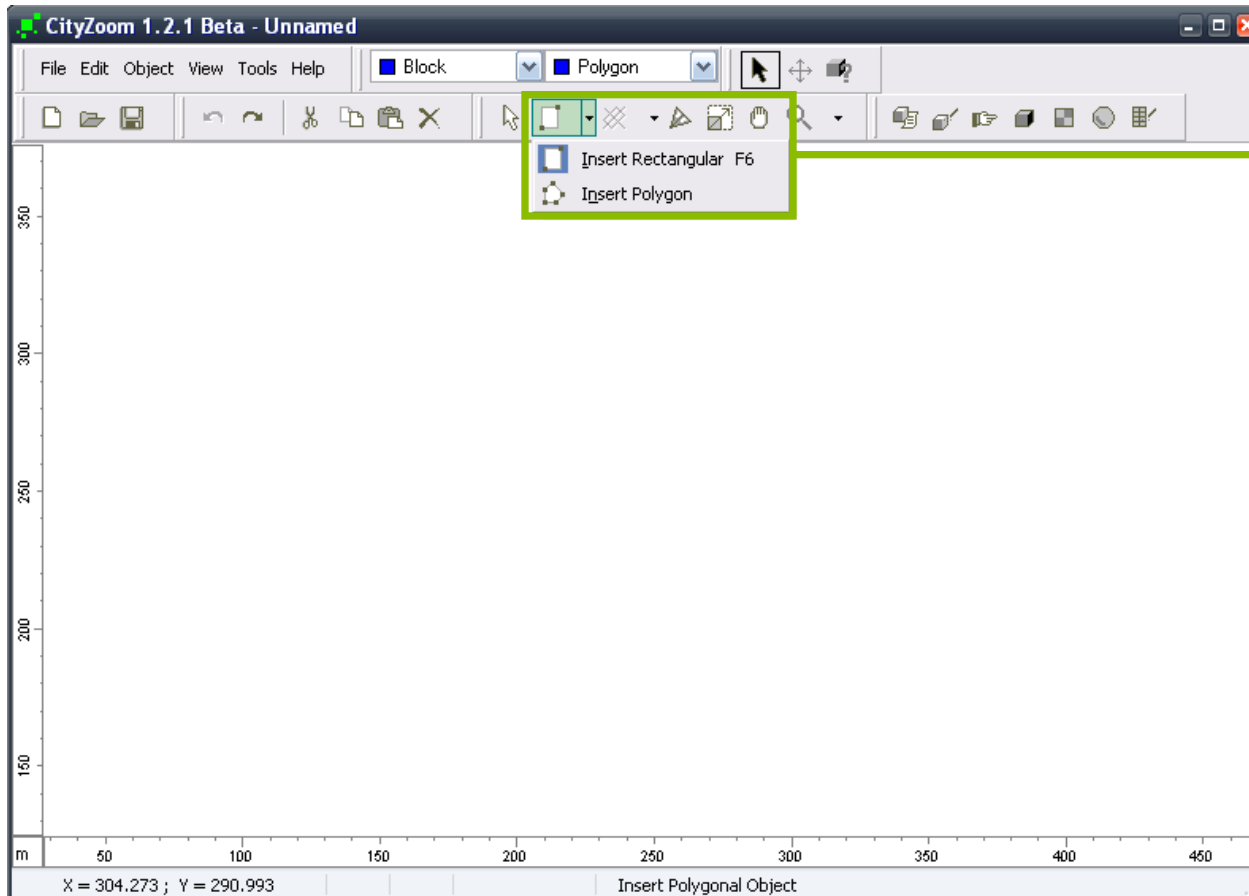
Drawing



The **Block** object will be active.

The user can set the desired object kind using this box.

Drawing



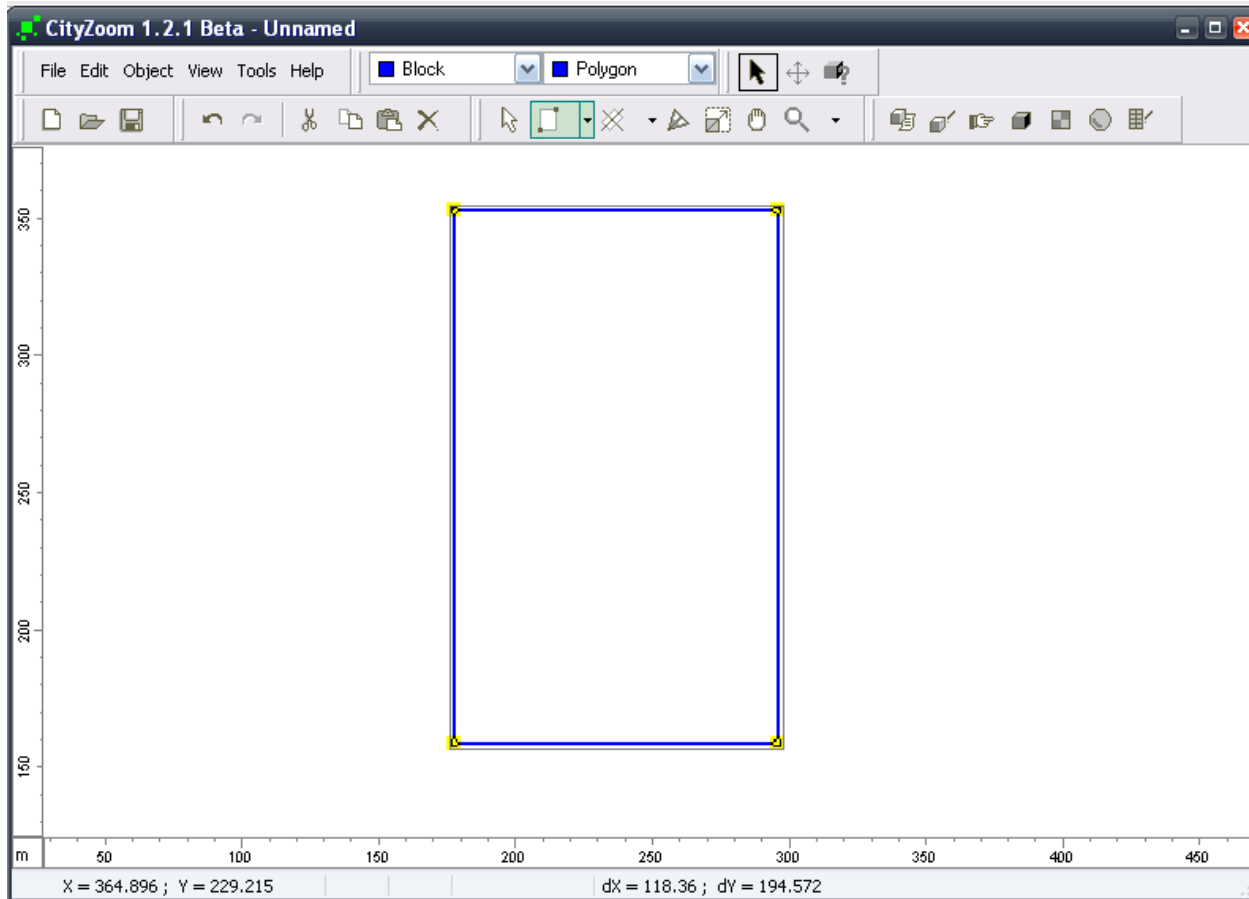
There are two options to start the drawing:

Insert Rectangular – to draw rectangular shapes;

Insert Polygon – to draw generic polygons.

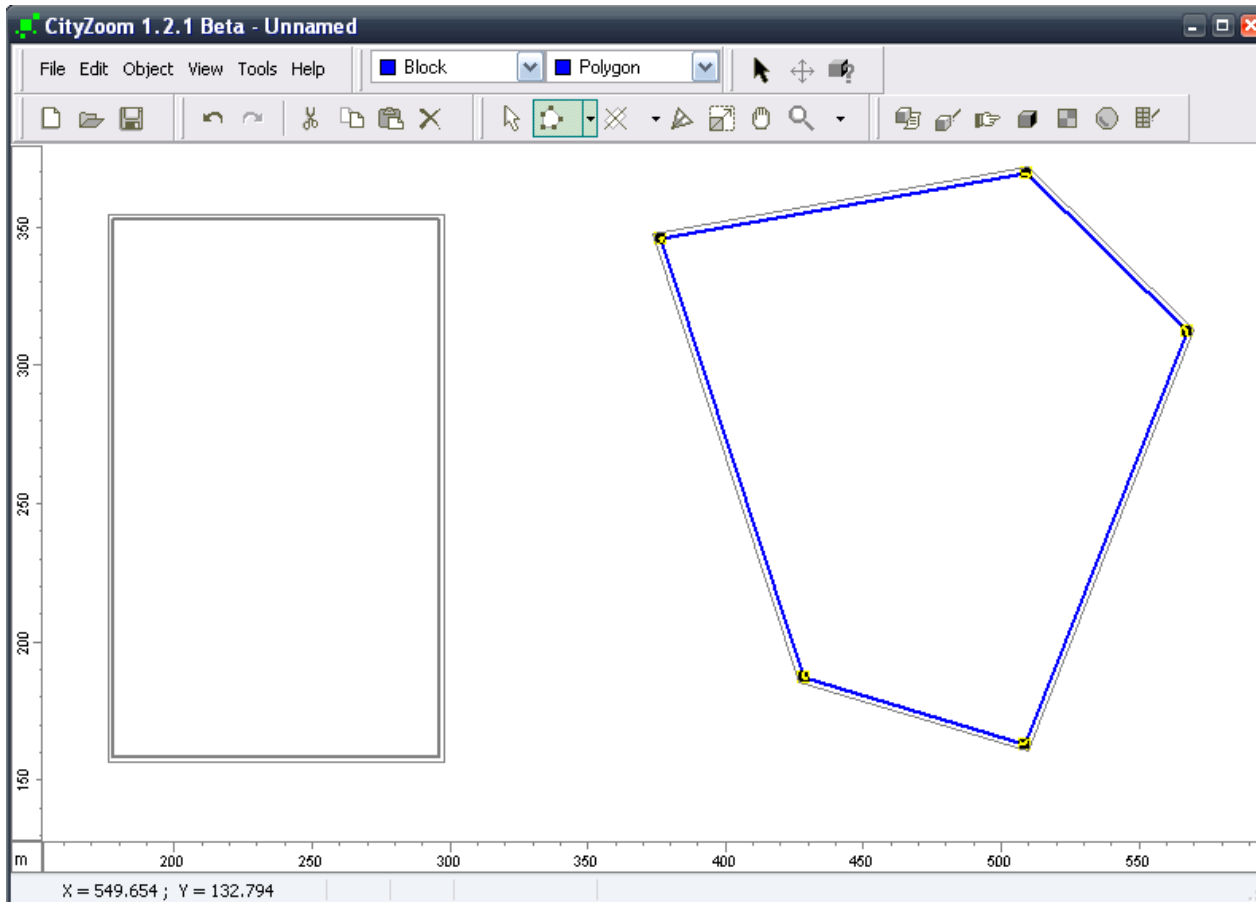
Select **Insert Rectangular** or use the shortcut F6.

Drawing



Left-click in the starting vertex position and drag the mouse to the opposite vertex.

Drawing



With the object **Block** active, click **Insert Polygon** to draw a polygon.

Left-click in the first vertex position, drag the mouse and left-click for the other vertexes. Right-click to close the polygon.