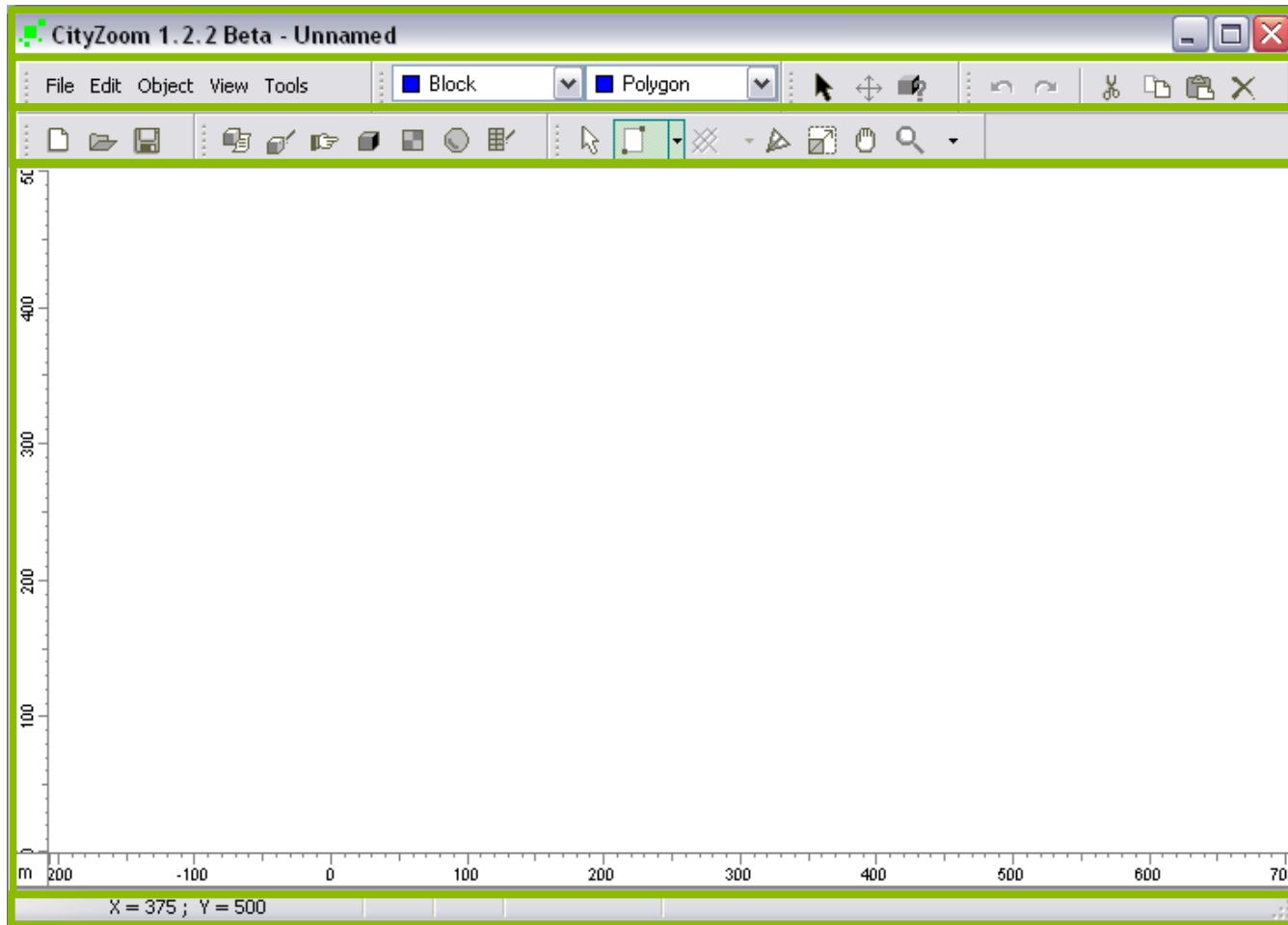


STARTING A WORK SESSION

Starting a work session



Title bar

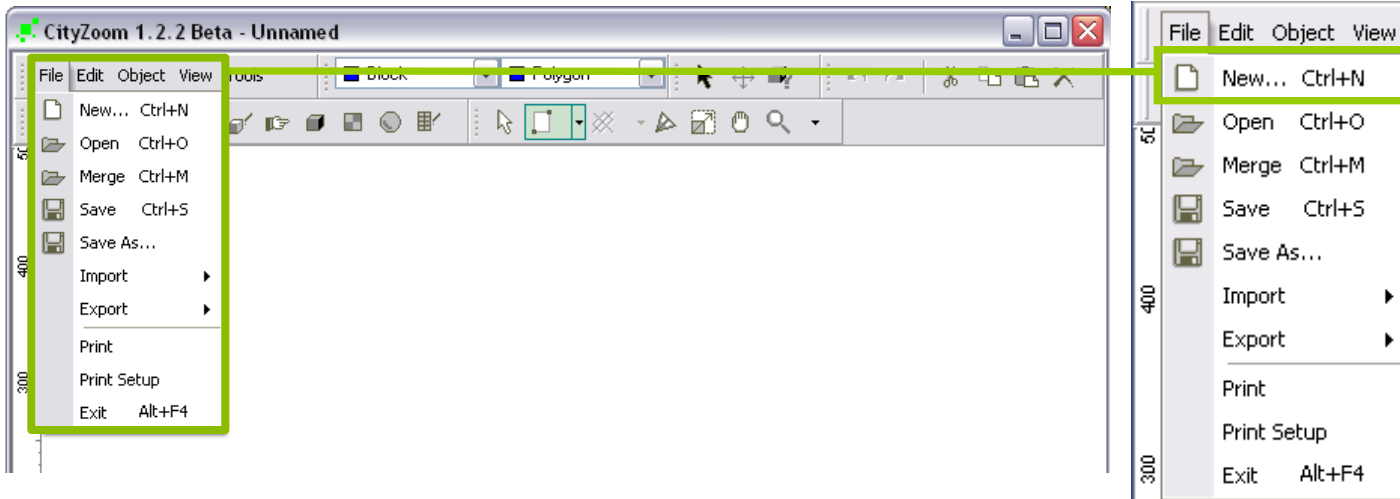
Main menu

Toolbar

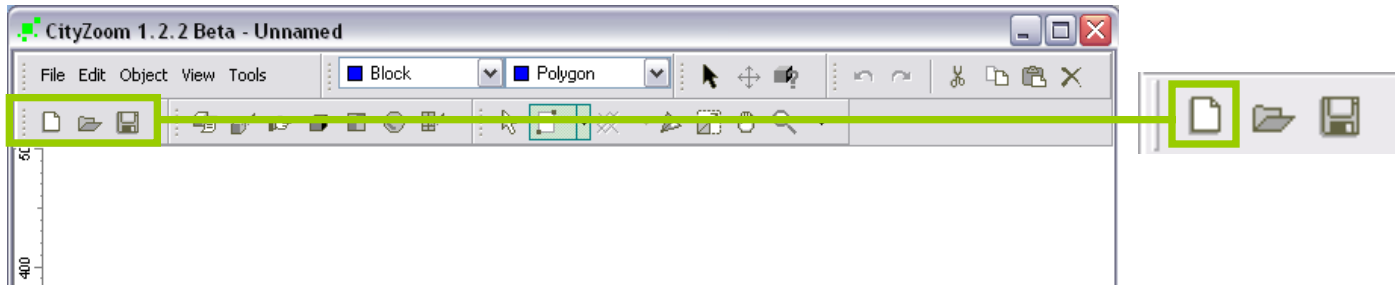
Display window

Coordinate system

Starting a work session



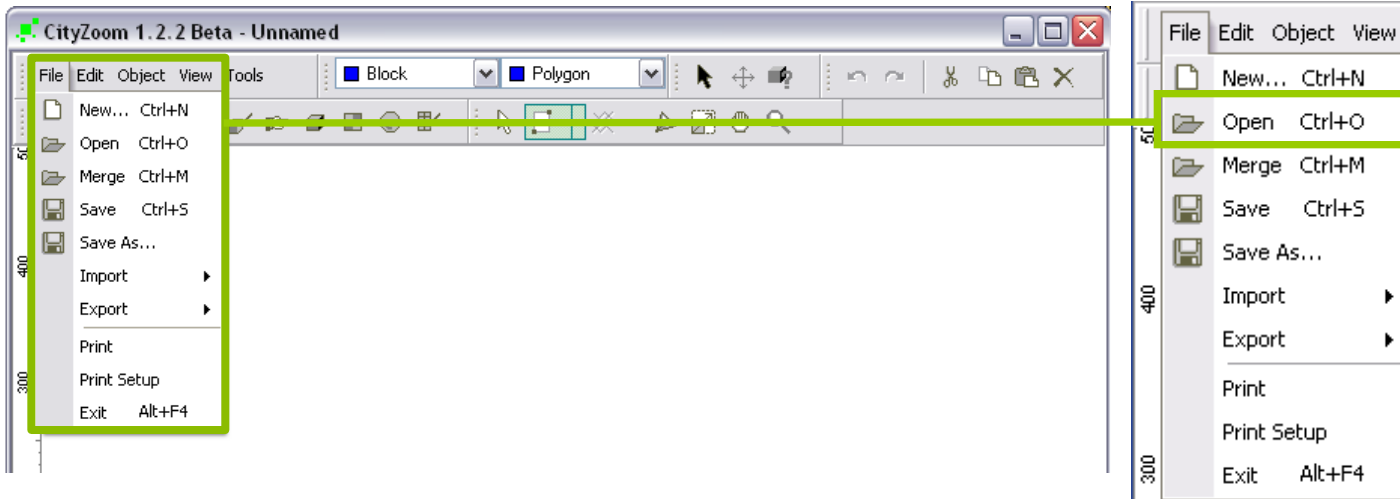
To create a new file, click **New** in the File menu...



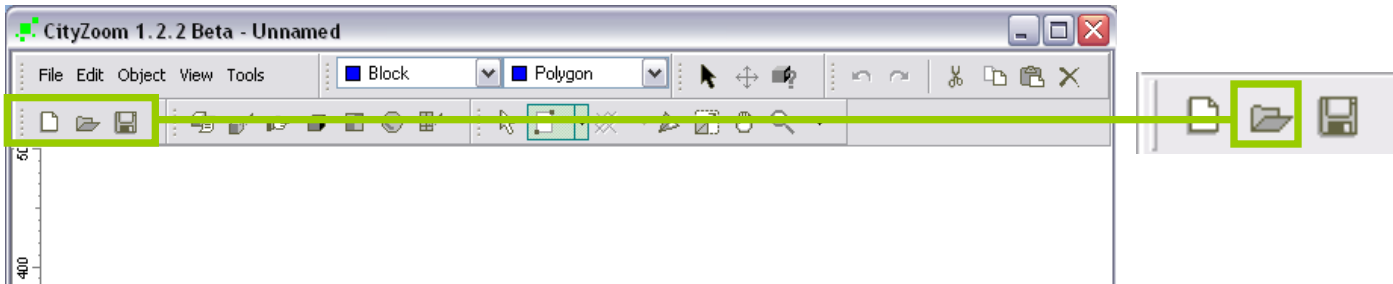
...or on the white sheet icon in the toolbar.

SHORTCUT: CTRL + N

Starting a work session



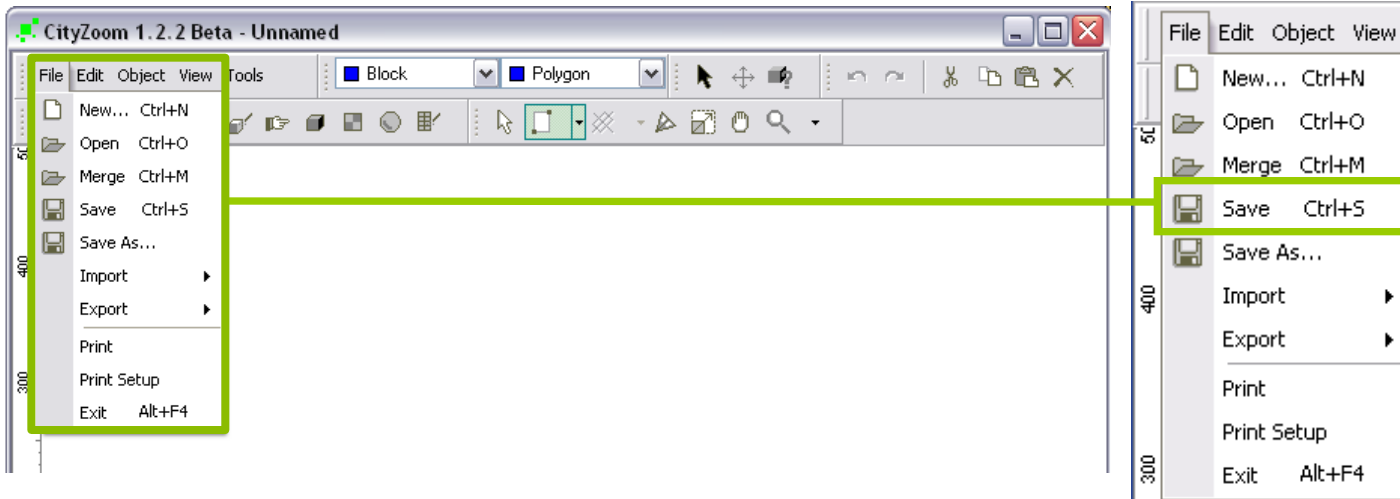
To open an existing file, click **Open** in the File menu...



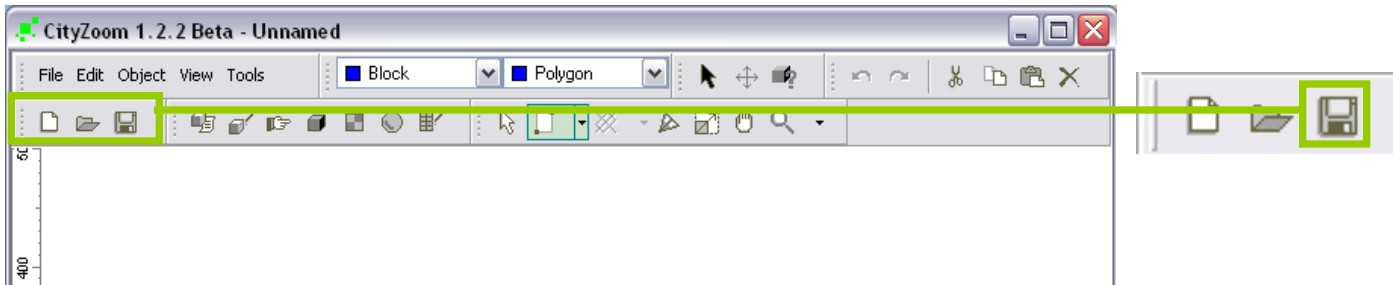
...or on the open file icon in the toolbar.

SHORTCUT: CTRL + O

Starting a work session



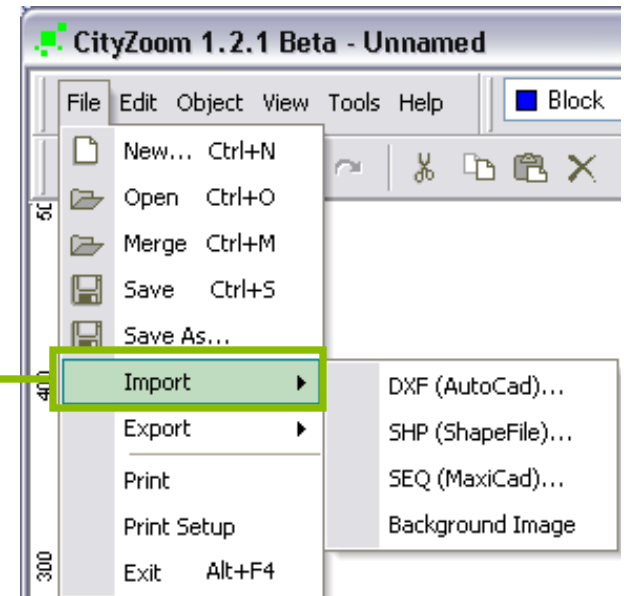
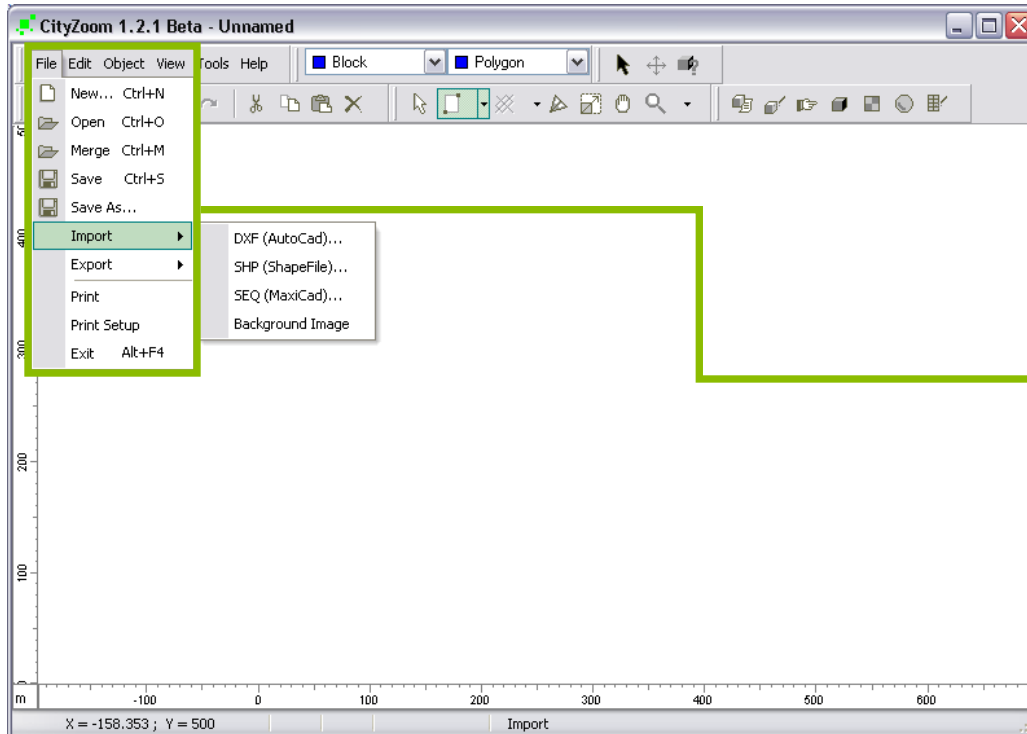
To save a file, click **Save** in the File menu...



...or on the floppy disk icon in the toolbar.

SHORTCUT: CTRL + S

Starting a work session



To import a file, click **Import** in the File menu. The options are:

- *.dxf (AutoCad);
- *.shp (ShapeFile);
- *.seq (MaxiCad);
- Background Image (*.bmp or *.jpg)

Obs: Import step by step will be presented in another exercise.